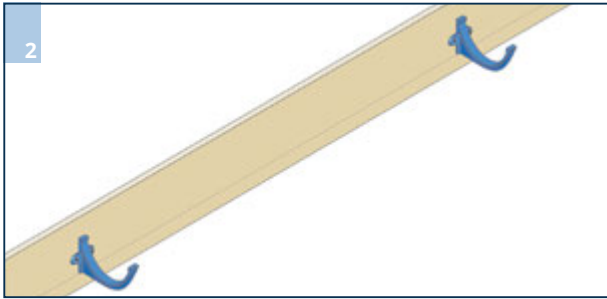
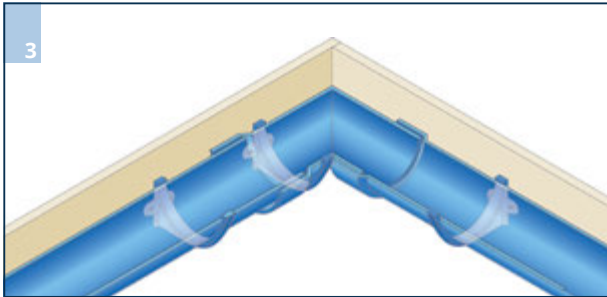


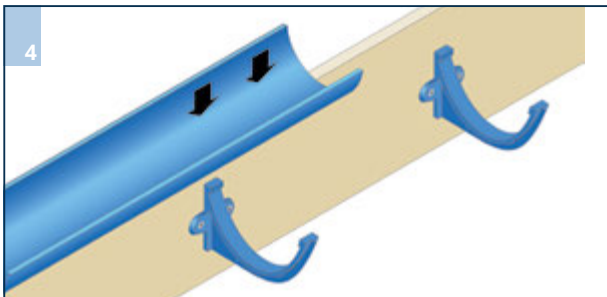
Set out the required gutter position and outlets to fall. Fixing method will vary dependant on site detailing. Fascia brackets are commonly used, alternative brackets are also available e.g. rise & fall and rafter brackets.



Position brackets at 915mm centres allowing additional brackets on outlets and angles (see Fig.3). Fix fascia brackets using 6mm x 40mm (No12 x 1.5") roundhead woodscrew.



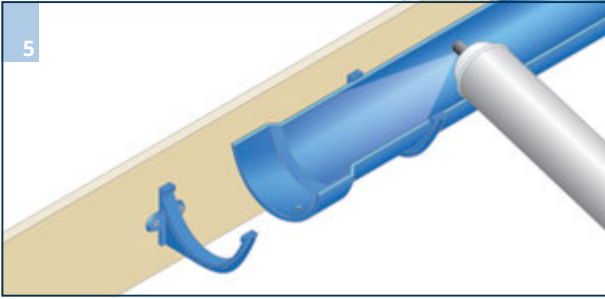
Plumb line outlets with gullies at ground level. Position angles, allowing an additional bracket adjacent to the joint with gutter length.



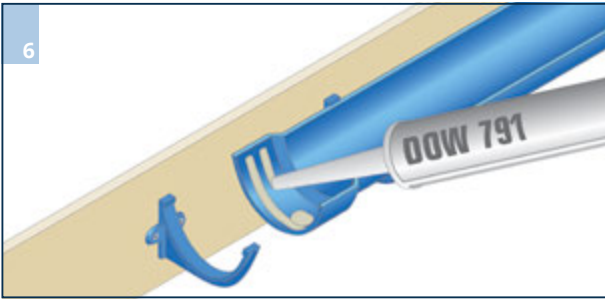
Lower the gutter onto the brackets ensuring sufficient clearance for the gutter joint. Position gutter into bracket.

Note: Half round and beaded half round profiles will clip into position, this is best done by locating the back of the gutter into the bracket whilst simultaneously pivoting the gutter into position and applying gentle pressure on the front edge.

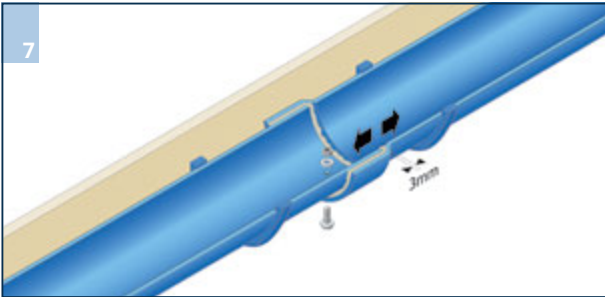
Note: For ogee and moulded profiles installed on a fascia bracket it is important to additionally secure the gutter to the fascia using a minimum of 1 no screw per length fixed through the hole provided in the back of the gutter.



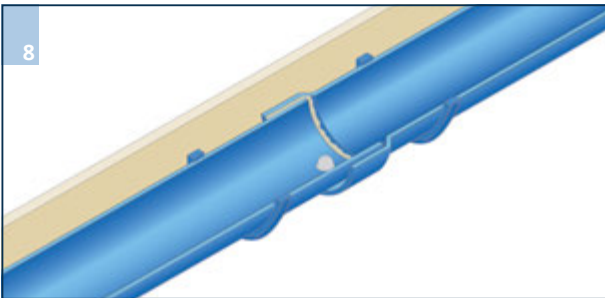
Cast gutters overlap at the joint with a spigot and socket. Degrease the jointing surfaces using Rainclear solvent cleaner (Product Code: SOLCLEN).



Apply two 6mm beads of low modulus silicone sealant either side of, and around the fixing hole. Rainclear recommends the use of DOW791 (Product Code: 791BLACK).



Insert the spigot end of the gutter allowing a 3mm expansion gap. Secure joint using aluminium M6 x 20mm nut, bolt and washer provided.



Finally, cone-off the exposed bolt stud and nut inside the gutter with a generous application of silicone. Tool off excess silicone around the joint and from external surfaces.

It is important to select the correct angle and stop end type to fit the required application. Refer to the below guide for correct selection of angles and stop ends.

### Half Round

